

# **FIRE NEWS RELEASE**

## **Kaibab National Forest**



Website: [www.fs.usda.gov/kaibab](http://www.fs.usda.gov/kaibab)  
Twitter: [www.twitter.com/KaibabNF](http://www.twitter.com/KaibabNF)  
Wildfire Information: [Inciweb.org](http://Inciweb.org)

---

**For Immediate Release**  
**August 22, 2013**

**Contact: Holly Krake, 928-635-5653**

### **South Zone Releases Fall 2013 Prescribed Fire Plans**

WILLIAMS, AZ – This year, the Williams and Tusayan Ranger Districts have prescribed (Rx) fire plans for approximately 13,000 acres and 5,000 acres respectively. However, these numbers represent planned maximums while actual acres burned may be significantly less. Starting in early September, fire managers will use prescribed fire as part of continuing efforts to improve forest health, enhance public safety, and return fire to a fire-adapted ecosystem. While Rx fire lowers the risk of severe wildfires on the forest, there may be noticeable impacts, such as smoke production.

Before a Rx fire, notification will be provided through multiple channels including; email news releases, Forest fire information line, Inciweb, Twitter, flyers, and the Forest website. Fire information boards, public advisories, and large signage will also be placed in the immediate fire management area.

During a Rx fire, firefighter activity, helicopter noise, and smoke can all have a significant impact. Fire managers hope to minimize any inconvenience through careful planning and coordination. “We work closely with the National Weather Service and the Arizona Department of Environmental Quality before and during prescribed burns to get things right and minimize impacts” said Fire Management Officer, James Pettit. “A critical goal is to be good neighbors to our communities and adjacent landowners”. Conditions include correct temperature, wind, fuel moisture, ventilation, and relative humidity. When these criteria are met, crews implement, monitor, and patrol each burn to ensure it meets the goals and objectives outlined by managers.

Immediately following a Rx fire, browning of lower level pine needles may occur as the tree crown is raised. This is perfectly normal and healthy. Some areas are also part of long term project work where future timber marking paint, mechanical thinning equipment, and other impacts may occur.

For additional Rx fire maps, photos, and information on active incidents, please visit [inciweb.org](http://inciweb.org) or call Holly Krake (USFS), Fire Information Officer, 928-635-5653

-USFS-

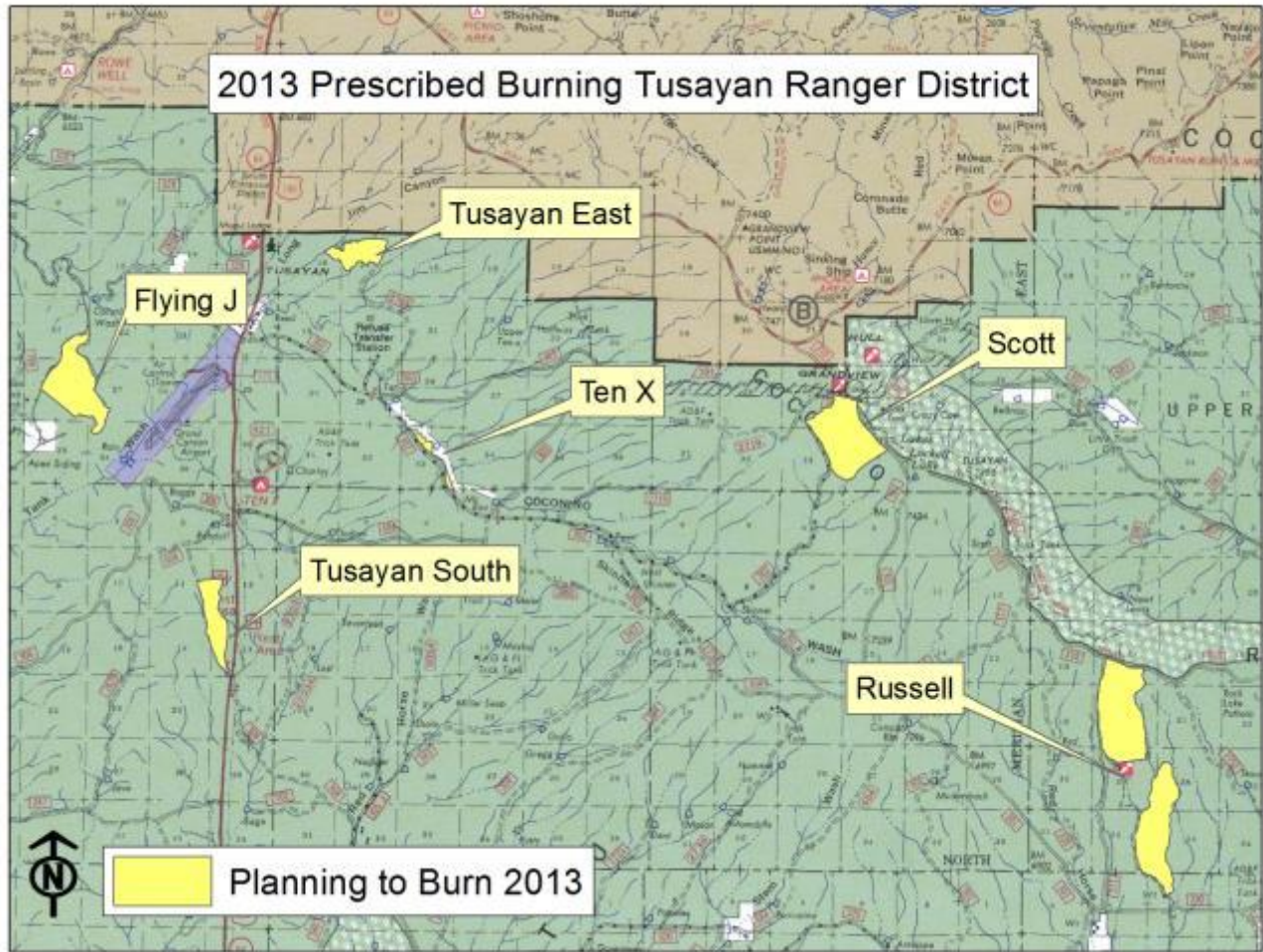


Image 1: Tusayan Ranger District Fall 2013 Rx Fire Planning Map.

Project Name	Acres	Location
Flying J	698	3 miles southwest of Tusayan, AZ west of Highway 64
Tusayan South	768	5 miles south of Tusayan, AZ west of Highway 64
Tusayan East	239	3 northeast of Tusayan, AZ east of Highway 64
Scott	1,707	10 miles northeast of Tusayan, AZ and south of Grandview area
Russell	1,468	17 miles southeast of Tusayan, AZ on the south side of FS Road 310
Ten X	45 (completed)	2 miles east of Tusayan, AZ along FS Road 302
<b>Total</b>	<b>4,925</b>	

Table 1: Project name, acres, and location description for Tusayan Ranger District Fall 2013 Rx Fire.



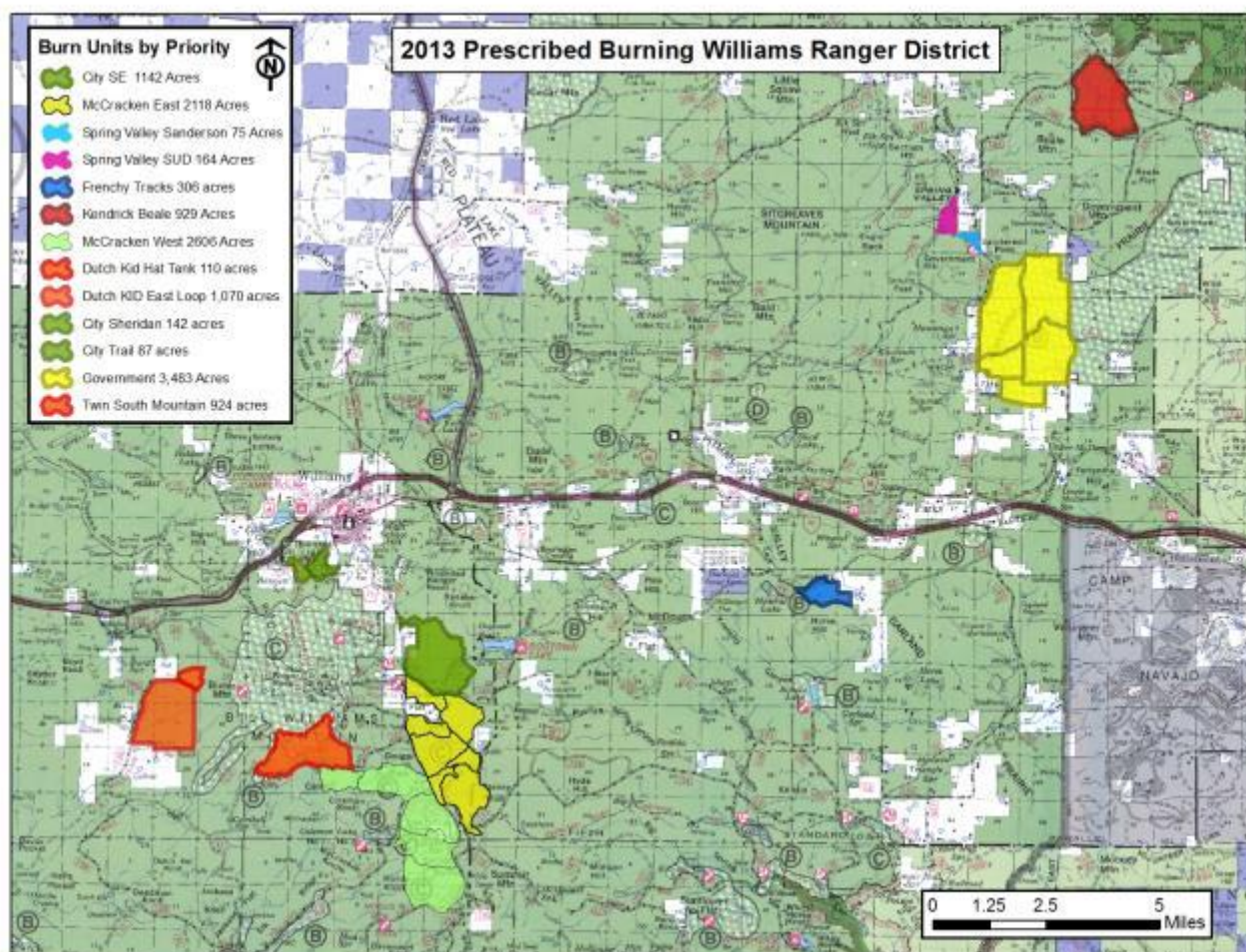


Image 2: Williams Ranger District Fall 2013 Rx Fire Planning Map.

Project Name	Acres	Location
City SE	1,142	4 miles southeast of Williams, AZ along County Road 73
McCracken East	2,118	5 miles southeast of Williams, AZ on the east side of County Road 73
Spring Valley Sanderson	75	Spring Valley area near FS Road 76
Spring Valley SUD	164	Spring Valley area near FS Road 76
Frenchy Tracks	306	2 miles east of Sherwood Forest Estates area
Kendrick Beale	929	8 miles northeast of Parks, AZ
McCracken West	2,606	6 miles south of Williams, AZ along the west side of County Road 73
Dutch Kid Hat Tank	110	6 miles southwest of Williams, AZ along FS Road 108
Dutch Kid East Loop	1,070	6 miles southwest of Williams, AZ along FS Road 108
City Sheridan	142	1 mile southwest of Williams, AZ
City Trail	87	1 mile southwest of Williams, AZ in the Clover Springs area
Government	3,483	3 miles northwest of Parks, AZ in the Government Prairie area
Twin South Mountain	924	6 miles south of Williams, AZ along Twin Springs Road
<b>Total</b>	<b>13,156</b>	

Table 2: Project name, acres, and location description for Williams Ranger District Fall 2013 Rx Fire.