

**UNITED STATES DEPARTMENT OF AGRICULTURE
FOREST SERVICE
COCONINO NATIONAL FOREST
MOGOLLON RIM RANGER DISTRICT
TEMPORARY AREA CLOSURE DUE TO FIRE**

Pursuant to 16 USC 551 and 36 CFR 261.50 (a) and (b), the following acts are prohibited in the area described in this order, and depicted on the attached map hereby incorporated into this order as Exhibit A, all within the Mogollon Rim Ranger District, Coconino National Forest, Coconino County, Arizona:

PROHIBITIONS:

1. Going into or being upon the restricted area, including all roads and trails within the restricted area. **36 CFR 261.53(e), 36 CFR 261.54 (a) and 261.55(a)**

EXEMPTIONS:

Pursuant to 36 CFR 261.50(e), the following persons are exempt from this order:

1. Persons with a Forest Service permit specifically authorizing the otherwise prohibited act or omission.
2. Any Federal, State, or Local Law Enforcement Officer or member of an organized rescue or fire fighting force in the performance of an official duty.

AREA Described:

The Restricted Area begins at National Forest Service Road (NFSR) 95 where it intersects with State Route 87, NFSR 95 is closed south until it intersects NFSR 96. The closure boundary continues east along NFSR 96 until it intersects NFSR 137. NFSR 96 is closed from the NFSR 95 intersection to the NFSR 137 intersection. The closure boundary continues south on NFSR 137 until it intersects NFSR 137A. NFSR 137 is closed at the intersection with NFSR 137A, but NFSR 137A is open. The closure boundary continues north and then east along the private boundary in section 17, Township 13 North (T13N) and Range 12 East (R12E). From the northeast corner of the private boundary the closure boundary continues east to the Forest boundary. The closure area boundary continues north to the northwest of the northeast corner of section 2, T14N, R12E. The closure boundary crosses Leonard Canyon to NFSR 9718U. The closure boundary continues north until it intersects NFSR 319. NFSR 319 is closed at the intersection with NFSR 9718U. The closure boundary continues west along NFSR 319 until it intersects the eastern private boundary in section 33, T15N, R12E. The closure boundary continues south, then west, then north along the private boundary until it intersects with State Route 87. The closure boundary continues west along State Route 87 until it intersects NFSR 95.

This area is located in T14N, R11E – T13N, R12E – T15N, R12E

Order Number: 04-18-09

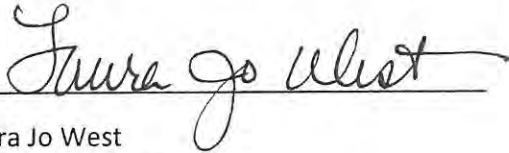
PURPOSE:

For the protection of public health and safety due to Tinder Fire.

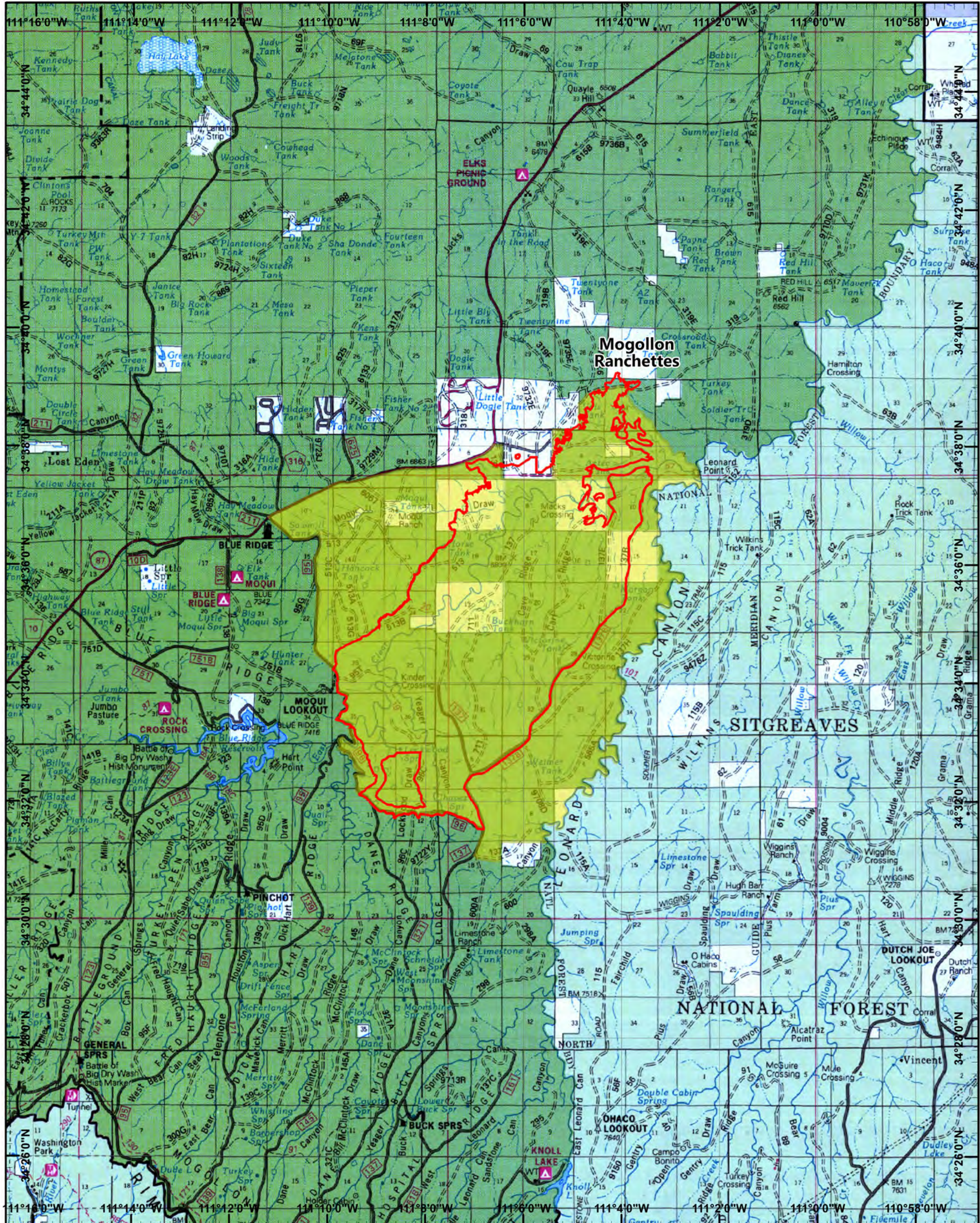
IMPLEMENTATION:

1. This order shall be in effect when signed and shall remain in effect until rescinded.
2. This order supersedes, rescinds, and replaces any previous orders prohibiting the same acts covered by this order.
3. Any violation of these prohibitions is punishable by a fine of not more than \$5,000.00 for individuals and \$10,000.00 for organizations and/or imprisonment for not more than six (6) months. [16 USC 551, 18 USC 3571(b)(6), 18 USC 3581(b)(7)].

Signed in Flagstaff, Arizona this 7th day of May, 2018.

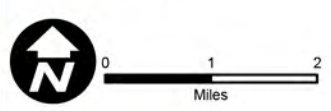
A handwritten signature in black ink, reading "Laura Jo West", is written over a horizontal line.

Laura Jo West
Forest Supervisor
Coconino National Forest



Tinder Fire Incident Closure

- Fire Perimeter
- Closure Area



Closure Order Number is 04-18-09

CLOSURE AREA, Exhibit A

The Restricted Area begins at National Forest Service Road (NFSR)95 where it intersects with State Route 87, NFSR 95 is closed south until it intersects NFSR 96. The closure boundary continues east along NFSR 96 until it intersects NFSR 137. NFSR 96 is closed from the NFSR 95 intersection to the NFSR 137 intersection. The closure boundary continues south on NFSR 137 until it intersects NFSR 137A. NFSR 137 is closed at the intersection with NFSR 137A, but NFSR 137A is open. The closure boundary continues north and then east along the private boundary in section 17, Township 13 North (T13N) and Range 12 East (R12E). From the northeast corner of the private boundary the closure boundary continues east to the Forest boundary. The closure area boundary continues north to the northwest of the northeast corner of section 2, T14N, R12E. The closure boundary crosses Leonard Canyon to NFSR 9718U. The closure boundary continues north until it intersects NFSR 319. NFSR 319 is closed at the intersection with NFSR 9718U. The closure boundary continues west along NFSR 319 until it intersects the eastern private boundary in section 33, T15N, R12E. The closure boundary continues south, then west, then north along the private boundary until it intersects with State Route 87. The closure boundary continues west along State Route 87 until it intersects NFSR 95. This area is located in T14N, R11E – T13N, R12E – T15N, R12E