



News Release

U.S. Forest Service
Kaibab National Forest
800 S. 6th St.
Williams, AZ 86046
Voice: (928) 635-8200
Email: mailroom_r3_kaibab@fs.fed.us
Web: www.fs.usda.gov/kaibab

Media Contact:
David Hercher, (928) 643-8110
davidjhercher@fs.fed.us



Burnt Complex update: July 29, 2015

Fredonia, Ariz., July 29, 2015 – Fuel reduction efforts continued to show positive results on the North Kaibab Ranger District’s Burnt Complex today. As fire managers anticipated, fire behavior continued to burn at a low-intensity and pace today, reaching 2,736 acres in size.

Today crews evened up the fire’s interior edge, an operation that extended east to west for approximately 3 miles.

Tomorrow crews plan to begin interior lighting along Forest Service Road 274C, which runs along a second ridgetop about 1-mile south of the burning that was completed on the Burnt Corral Ridge earlier this week. This ridgetop burning will allow firefighters to manipulate the fire so it will back down the ridgeline naturally in a southerly direction. Weather dependent, fire managers estimate this operation to take approximately 5 days before reaching its southern perimeter boundary.

“Once the excess fuels along the forest floor are consumed, the result will be a healthier landscape and some much needed fire breaks within this portion of the forest,” said North Kaibab District Ranger Randall Walker, during a radio interview yesterday. “These fuel breaks will help dramatically reduce future fire behavior, resulting in a safer landscape for our firefighters, our visitors, and our community.”

Fire Name/Date Started: Burnt Complex; the Burnt Fire was discovered on July 5, and the Corral Fire on July 9.

Cause: Lightning

Planning Area Boundary: The established 3,915-acre planning area is bound by Forest Service Road (FSR) 228 on the north, FSR 274 on the south and west, and FSR 22 on the east.

Size: 2,736 acres

Smoke: Smoke is visible today but minimal throughout portions of the district near the planning area.

Resources Committed: 1 Type II Wildland Fire Module, 3 Type-6 engines, 25 wildland firefighters, 7 overhead; 32 personnel total.

Closures: Currently no road or trail closures are in effect or anticipated; however, hazard signs are posted, and motorists should exercise caution when around traveling near the planning area boundary.

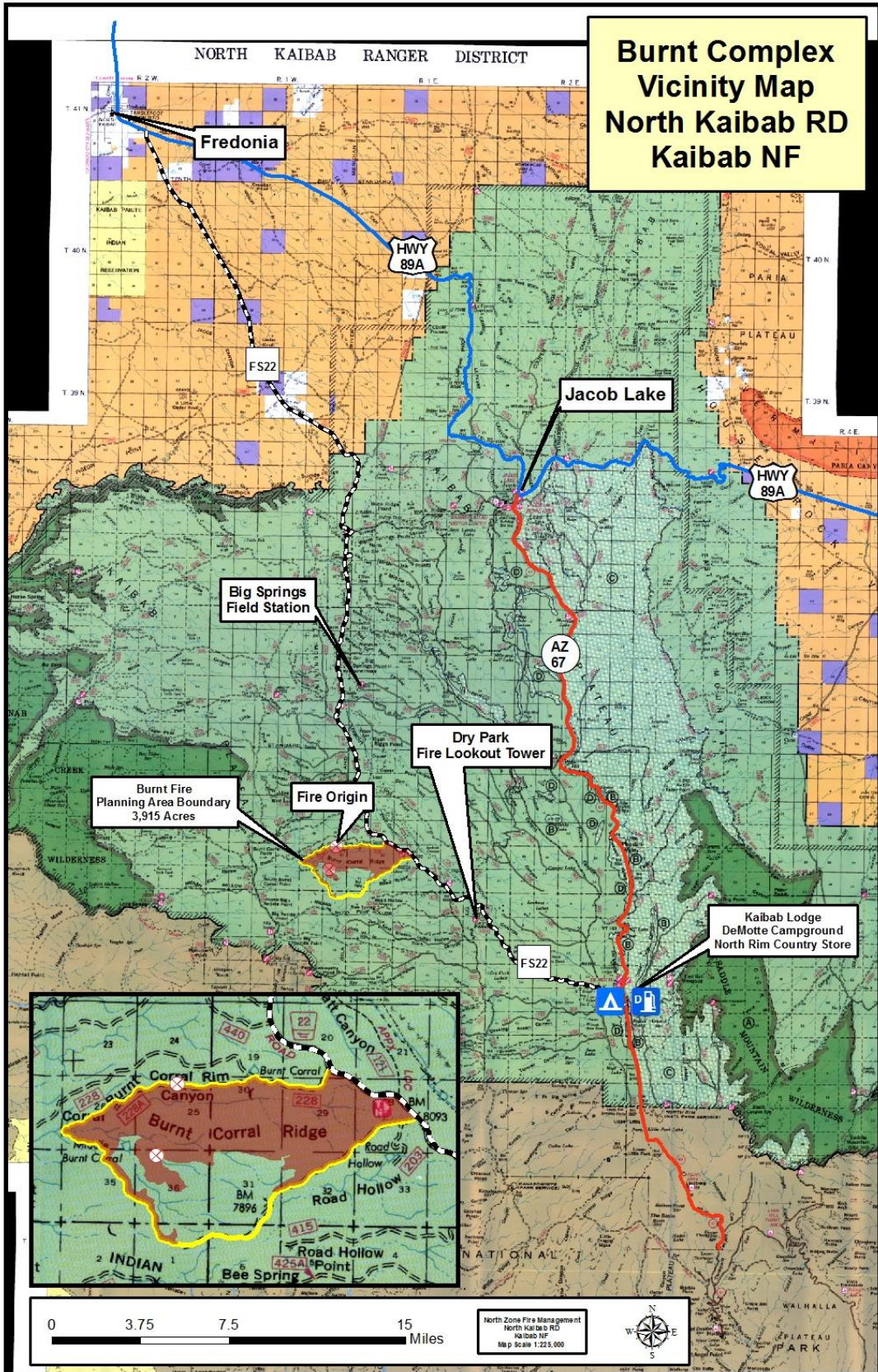
Get fire activity updates and maps 24 hours-a-day:

Fire Information Line: 928-635-8311

InciWeb: inciweb.nwcg.gov/incident/4381/

Text Message: text ‘follow kaibabnf’ to 40404

###



USDA is an equal opportunity provider, employer, and lender.